



fig. -5.35



fig. -01x00

Room controller RRTA2 / RRTB2

continuous output with settable P-Band
 internal or external sensor Djadun F../11
 direction switchable, heating or cooling (FS)
 Housing: 75 x 75 x 27 mm, IP30

RRTB2: with signal limiter for minimal or maximal flap opening

Technical data

Electrical data	Power supply Power consumption Output RRTA2 Output RRTB2	24 Vac/dc (21,6...26,4 V) < 1 VA 2...10 Vdc, max. 2 mA 0...10 Vdc, max. 2 mA, with signal limiter for minimum or maximum flap opening
Functions	Adjustment range Directional switch K / H Setpoint correction SK P-Band XP Temperature probe	see order information K = (da) tR increases - Y increases, H (ia) tR increases - Y decreases ±5 K, adjustable internally 1...6 K (factory setting FS 2 K) integrated or external sensor Djadun series F..11
Safety	Protection type / class EMV CE conformity Ambient temperature ambient conditions Permitted relative humidity	IP30 / III (SELV) EN 55011:2011-04, 55011-103:2013-02 according to 2014/30/EU operation 0...50 °C; storage -10...+70 °C normally air polluted max. 95% RH, no condensation
Mechanical	connection technology Housing color cover Weight	screw terminal 2,5 mm ² ABS 75 x 75 x 27 mm, Socket PC (black) pure white. like RAL9010 or pearl white like RAL1013 about 75 g

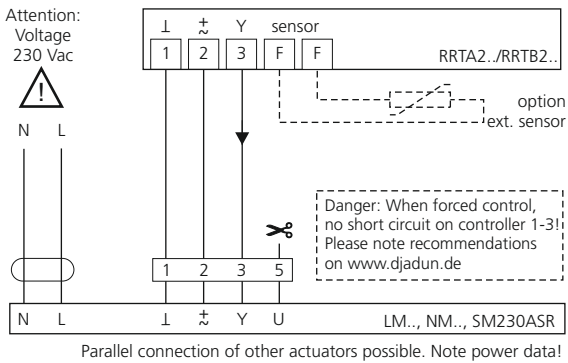
Product features

Application	For control of continuous actuators in HVAC systems.
Control function	1 continuous output with proportional function
Control signal	RRTA2... 2...10 Vdc, direction switchable heating or cooling (FS) RRTB2.. 0...10 Vdc, with signal limiter for minimum or maximum flap opening
Power supply	24 Vac/dc, or direct by actuators for example N../L../SM230ASR, DM2.2

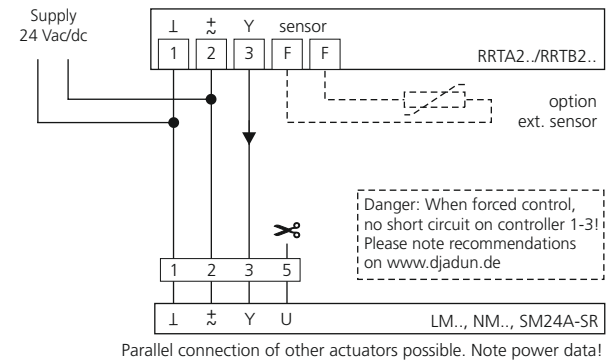
Order information

Item number	signal	range	Variant
RRTA2/5.35-00100	2...10 Vdc	5...35 °C	internal sensor, pure white
RRTA2/5.35-00000	2...10 Vdc	5...35 °C	internal sensor, pearl white
RRTB2/5.35-00100	0...10 Vdc	5...35 °C	internal sensor, pure white
RRTB2/5.35-00000	0...10 Vdc	5...35 °C	internal sensor, pearl white
RRTB2/21.5-00100	0...10 Vdc	16...26 °C	internal sensor, pure white, setting scale Threshold arrows red-blue
RRTB2/21.5-00000	0...10 Vdc	16...26 °C	internal sensor, pearl white, setting scale Threshold arrows red-blue
RRTA2/.., RRTB2/.., for external sensor			-10000 (pearl white) o. -10100 (pure white)
RRTA2/.., RRTB2/.., for ext. sensor, adjustment inside			-11000 (pearl white) o. -11100 (pure white)
RRTA2/.., RRTB2/.., internal sensor, adjustment inside			-01000 (pearl white) o. -01100 (pure white)

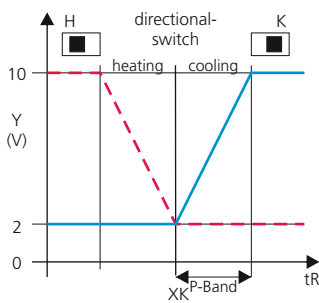
Connection diagram L., N., SM230ASR



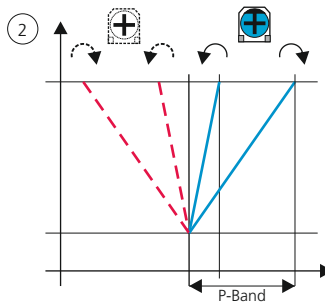
Connection diagram 24 V actuators



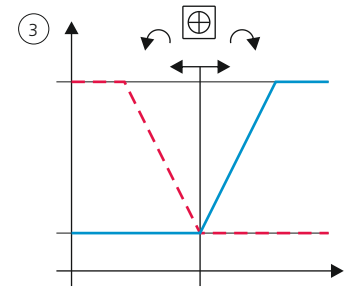
Function diagram RRTA2



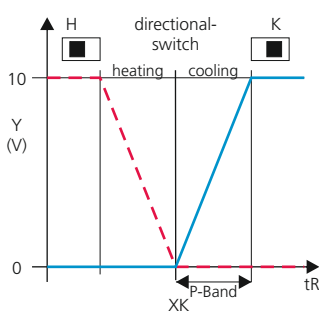
P-Band XP



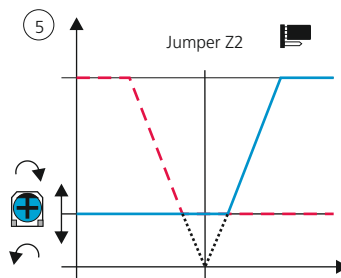
Setpoint correction SK



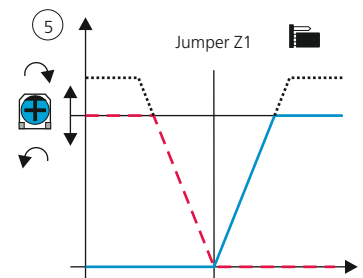
Function diagram RRTB2



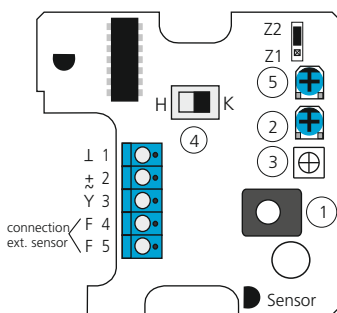
Min.-limiter RRTB2



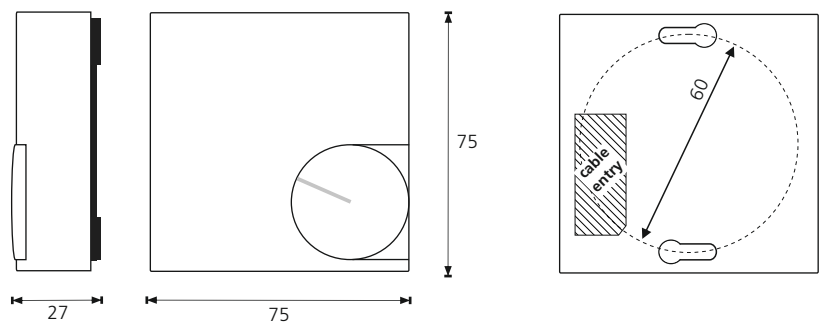
Max.-limiter RRTB2



Circuit Board <ccb: A4087...>



Dimensions and drilling plan



- ① Setpoint adjustment XK
- ② P-Band XP
- ③ setpoint or sensor correction
- ④ direction switch H / K
- ⑤ Min.-Max.-limitation Y-signal (only RRTB..)



- Remove adjustment knob
- Set stops to temperature range
- Replace adjustment knob
- Check stops